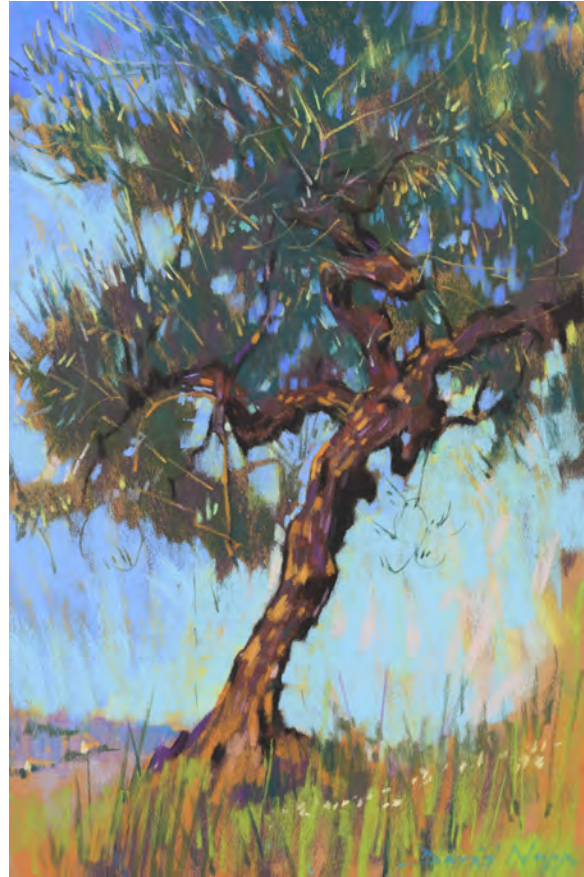




'Pulteney Bridge and Weir', pastel 65cm x 50cm



'Villa Borghese and Palms, Lake Maggiore', pastel 65cm x 50cm



'The Olive Tree', pastel 50cm x 32cm



'The Rose', pastel 32cm x 25cm



'Old Ruin and Poppy Field, Cesi', pastel 60cm x 80cm

Front: 'Bath Abbey', pastel 80cm x 60cm



'In A Different Light'
New work by David Napp inspired by the City of Bath



HAWKINS
ORIGINAL WORKS OF ART

6 Bridge Street, Bath BA2 4AS Telephone 01225 312773
e-mail: info@hawkinsfineart.com web: hawkinsfineart.com

Directions: Hawkins Fine Art is on Bridge Street opposite The Victoria Art Gallery.
We are open Monday to Saturday 10am to 6pm and occasional Sundays

'In A Different Light'

New work by David Napp inspired by the City of Bath



As a painter David Napp is well known for invoking the hot, sensual atmosphere of southern Europe. Now he has brought his keen eye and warm colour palette to the very different lighting conditions here in the streets of Bath and we

are delighted to offer a show that combines pictures from home and away. This is inspired 'plein air' painting of the highest order by an artist at the peak of his powers

"If the gallery directors, Mike and David, hadn't suggested it I never would have thought of it myself; painting on the streets of Bath has been a revelation. The natural Bath Stone in sunlight evokes the warm colours of the Mediterranean that I so often use in my work at home in Italy, where a lot of the paintings in this show originate. From the Abruzzo hills to Lake Maggiore in Lombardia and more recently my time here in Bath, you will see a show that is redolent with light and colour.

Whenever the sun shines Bath is transformed. However, being able to capture these moments has been difficult to say the least as 'plein air' painting with only fragments of sunshine between impending showers and heavy cloudy skies creates a real challenge for the artist. But there is a plethora of subject matter here that demands that one persists: lively cobbled streets, old pubs that delight the eye with flower baskets festooned with colour, restaurants that exude tradition and classic iconic views of the old town such as the Abbey and Pulteney Bridge - if only the weather would improve!

This is my first toe in the water here in Bath, (If you'll forgive the pun!) but by no means my last. Come and tell me what you think of the results so far.. "

David Napp



'Sauve, Le Gard', pastel 60cm x 80cm



'Still Life', pastel 65cm x 50cm



'Villa and Wisteria, Lake Maggiore', pastel 60cm x 70cm



'The Pump Room - Bath', pastel 50cm x 65cm



'Le Balcon', oil on canvas 70cm x 55cm



'Parade Gardens - Bath' pastel 32cm x 50cm



'Old Church, Brinzio', pastel 50cm x 65cm



'Fattoria Roccolo, Lombardy', pastel 58cm x 80cm



'Pin Mill, Suffolk', pastel 50cm x 65cm



'Olive Grove and Poppy Field', pastel 50cm x 65cm



'The Grand Canal, Venice', oil on board 55cm x 70cm



'Potted Plants at sunset, Lombardy', pastel 50cm x 65cm



'Castiglione: Morning Light', pastel 61cm x 23cm